



## SIDHIVINAYAK ENTERPRISES

### **Contact**

9579574999 / 9404284066

### **Email**

[siddhivinayakent957@gmail.com](mailto:siddhivinayakent957@gmail.com)



### **Introduction:**

Welcome to Siddhivinayak Enterprises! We are a leading provider of top-quality engineering products, dedicated to meeting the diverse needs of our valued customers. With a strong focus on precision, reliability, and customer satisfaction, we strive to be your go-to source for all your engineering requirements.



### **Our Vision:**

At Siddhivinayak Enterprises, our mission is to deliver exceptional engineering solutions that empower businesses and industries to thrive. We aim to provide innovative, reliable, and cost-effective products that meet the highest standards of quality, safety, and performance. Through our commitment to excellence, we strive to contribute to the success and growth of our customers.



### **Our Mission:**

Our vision is to be recognized as a trusted leader in the engineering industry, known for our unwavering commitment to quality, innovation, and customer satisfaction. We aspire to build long-term partnerships with our customers, based on mutual trust, integrity, and shared success. By continuously improving our products, services, and processes, we aim to exceed expectations and set new benchmarks for excellence.



### **Our Products:**

- ▶ Perforated Type Cable Trays And Accessories
- ▶ Ladder Type Cable Trays And Accessories
- ▶ Flooring Raceways / Trunking / Ducts
- ▶ GI Full Threaded Rod / Bullet Fastener
- ▶ Slotted C-Channels / Z-Channels / Angle Supports
- ▶ Solar Strut Channel
- ▶ Powder Coating
- ▶ Earthing Strips / Flats
- ▶ Cord Strap And Wire buckles
- ▶ Hot Dip Galvanizing



**SIDHIVINAYAK**  
ENTERPRISES

**Contact**

9579574999 / 9404284066

**Email**

sidhivinayakent957@gmail.com

## PERFORATED TYPE CABLE TRAYS

**Material Use** : Pre-Galvanized / M.S. / S.S. / Aluminium / FRP

**Width** : 50 mm to 1000 mm.

**Height** : 25 mm to 200 mm.

**Thickness** : 1.2 mm to 2.0 mm.

**Finish** : Hot Dip Galvanized / Powder Coated



## LADDER TYPE CABLE TRAYS

**Material Use** : Pre-Galvanized / M.S. / S.S. / Aluminium / FRP

**Width** : 150 mm to 1500 mm

**Height** : 50 mm to 200 mm

**Thickness** : 1.6 mm to 2.0 mm

**Finish** : Hot Dip Galvanized / Powder Coated.



## RACEWAY/TRUNKINGS AND DUCTS

**Material Use** : Pre-Galvanized / M.S. / S.S. / Aluminium / FRP

**Width** : 50 mm to 1000 mm

**Height** : 25 mm to 200 mm

**Thickness** : 1.2 mm to 2.0 mm

**Finish** : Hot Dip Galvanized / Powder Coated





## SIDHIVINAYAK ENTERPRISES

### 📞 Contact

9579574999 / 9404284066

### ✉ Email

[sidhivinayakent957@gmail.com](mailto:sidhivinayakent957@gmail.com)

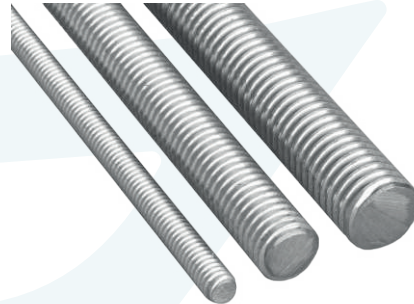
### GI FULL THREADED ROD

---

**Material Use** : Galvanized

**OD** : m8 to m16

**Length** : 1000 mm to 3000 mm.



### WIREMESH CABLE TRAY

---

**Material use** : MS/ SS

**Width** : 50mm to 1000mm

**Height** : 25mm to 200mm

**Thickness** : 3 to 6 mm

**Finish** : pre-Galvanized/ hotdip

### C-CHANNEL

---

**Material Use** : Galvanized / hr / SS / Aluminium

**Width** : 35 mm

**Height** : 15 mm

**Thickness** : 1.6 to 2 mm.

**Finish** : Galvanized



### SOLAR STRUT CHANNEL

---

**Material Use** : galvanized / hr

**Size** : 41 mm x 41 mm & 41 mm x 21 mm

**Thickness** : 1.6 to 2 mm.

**Finish** : Hot Dip Galvanized



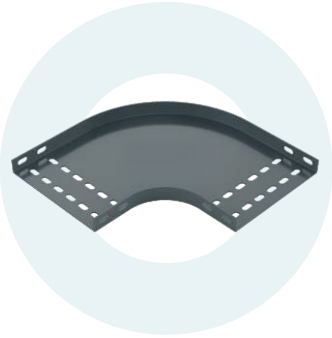
**SIDHIVINAYAK**  
ENTERPRISES

📞 **Contact**

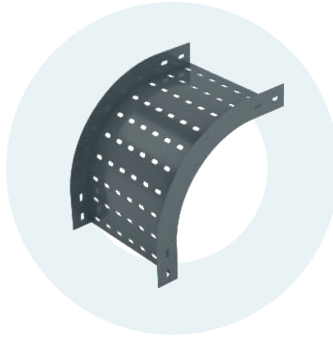
9579574999 / 9404284066

✉ **Email**

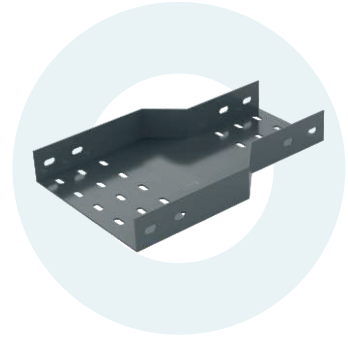
[sidhivinayakent957@gmail.com](mailto:sidhivinayakent957@gmail.com)



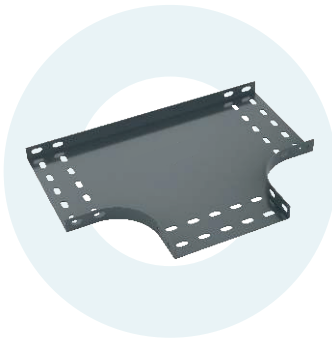
**Perforated Type  
Horizontal Elbow/Bend**



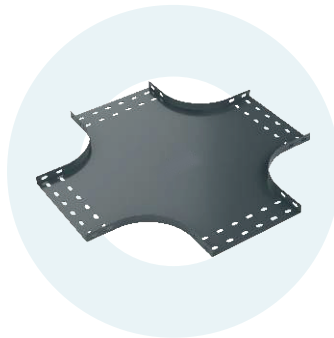
**Perforated Type  
Outer Elbow/Bend**



**Perforated Type  
Reducer**



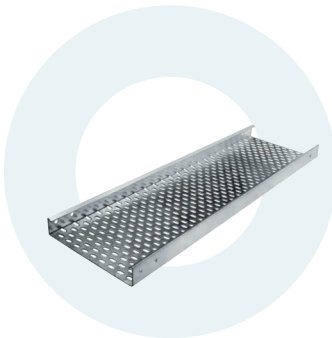
**Perforated  
Type Tee**



**Perforated  
Type Cross**



**Ladder Type  
Horizontal Elbow/Bend**



**Hot Dip Galvanizing**



**Earthing Strips / Flats**



**Cord Strap And Wire buckles**





**SIDHIVINAYAK**  
ENTERPRISES

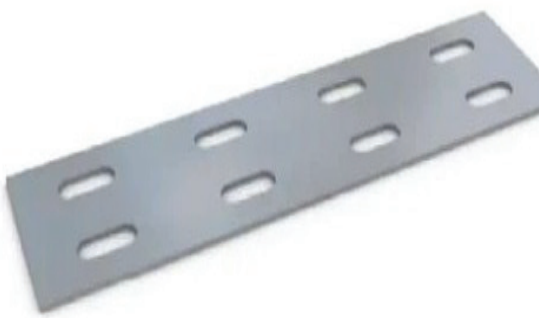
📞 **Contact**

9579574999 / 9404284066

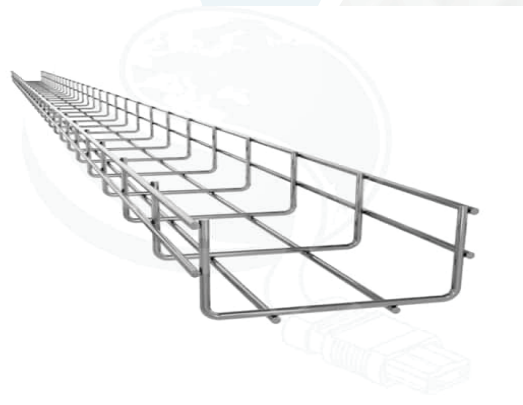
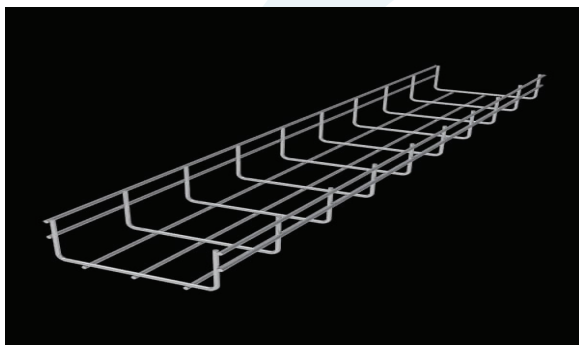
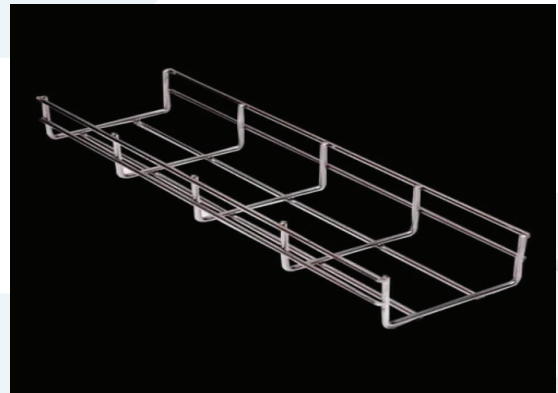
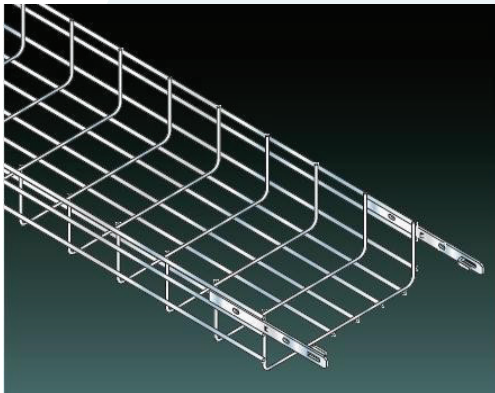
✉ **Email**

[sidhivinayakent957@gmail.com](mailto:sidhivinayakent957@gmail.com)

## COUPLER



## WIREMESH CABLE TRAY



## 📍 OFFICE ADDRESS

GAT NO 397/5, NEAR RBL BANK NERLE,  
WALWA, SANGALI, MAHARASHTRA - 415406

## 📍 MANUFACTURING PLANT

GAT NO.654, NEAR NH4 SATARA HIGHWAY  
VELU FATA, VELU, TAL – BHOR PUNE,  
MAHARASHTRA- 412205